

إمدادات

IMDADAT

شركة إمدادات الجزيرة العربية التجارية

IMDADAT AL JAZERA ALARABIA TRADING CO.



INDEX

الفهرس

Introduction, Vision & Mission	2	المقدمة، الرؤية والرسالة.....
Pipes.....	3	الأنابيب.....
Fittings.....	8	الوصلات.....
Fasteners.....	11	المثبتات.....
Valves.....	13	الصمامات.....
Commercial Steel.....	15	الحديد التجاري.....
PVC & Sanitary Accessories.	18	أنابيب بي في سي وإكسسوارات صحية.

INTRODUCTION

Imdadat Al Jazera Al Arabia Trading Company founded in 2016 as extend to the success of Al Jazera group of companies as the trading party of the group to expand and merge with the Saudi Arabian & G.C.C market in particular along with Middle East & International Market through being agents, (distribution for international and local products and well known and good reputable brands names). This is the extension and reflection to the vision and mission of the group being a pioneer with the products we deliver to our customers to maintain our partnership with them.

مقدمة

تأسست شركة إمدادات الجزيرة العربية التجارية عام ٢٠١٦ إمتداداً لنجاحات مجموعة شركات الجزيرة وهي الكيان التجاري الجديد للمجموعة بهدف التوسع والاندماج مع كافة متطلبات السوق السعودي والخليجي بشكل خاص وسوق منطقة الشرق الاوسط والسوق العالمي بشكل عام من خلال الإرتباط بوكالات والتوزيع لشركات أو منتجات عالمية أو محلية معروفة ذات جودة عالية، وهذا انعكاس لرؤية وأهداف المجموعة في الريادة لما نقدمه من منتجات لإرضاء عملائنا والحفاظ على شراكاتنا معهم.

VISION & MISSION

الرؤية و الرسالة

• Vision

To be one of the leading companies in the Kingdom of Saudi Arabia through the provision of various products through the company's sections, Commercial Division (Steel - Plastic - Electric Supplies) or the Industrial Division (Valves and Accessories - Fasteners - Fittings).

الرؤية:

أن تصبح شركة إمدادات الجزيرة العربية من أهم رواد الشركات التجارية في المملكة العربية السعودية من خلال تقديم منتجات متنوعة عن طريق أقسام الشركة وهي القسم التجاري (حديد - بلاستيك - كهرباء) أو القسم الصناعي (صمامات وكمالياتها - مواد الربط - وصلات).

• Mission

Our mission is to provide a high quality products which meet customers need as well as an unsurpassed customer service through the company branches located all over the Kingdom of Saudi Arabia.

الرسالة:

تقديم منتجات عالية الجودة تلبي رغبات العملاء بالإضافة إلى خدمة عملاء غير مسبوقه من خلال فروع الشركة المنتشرة في جميع أنحاء المملكة العربية السعودية.

PIPES

الأنابيب



1. WELDED PIPES

أنابيب

ERW pipes (Electric Resistance Welding) are extremely versatile. That's why they're commonly used in many industries from gas to sewage. They also come in a variety of types and sizes. And they can easily be customized to fit the needs of a particular project, adding even more to its versatility. Truth be told it's near impossible to find an industry that does not use steel pipe in some capacity.

CARBON STEEL PIPES

أنابيب حديد

Standard - Grade	A 53 GR A – A 53 GR B – API 5L GR B (Dual Specification)
Size Range	ERW: (Electric Resisting Welding): From 1/2" up to 24" SPW: (Spiral Welding): From 18" up to 100" SAW: (Submerge Arc Welding): From 16" up to 60"
Length	6m, 12m, DRL
Schedule	10 to XXS



STAINLESS STEEL PIPES

أنابيب ستانليس ستيل

Standard - Grade	A 312 WELDED ERW Grade 316/316, 304/304
Size Range	From 1/2" up to 36"
Length	6m, 12m, SRL, DRL
Schedule	10 to XXS
Welded Types	ERW (Electric Resisting Welding) EFW (Electrical Fusion Welding) SPW (Submerge Arc Welding)



2. SEAMLESS PIPES

أنابيب غير ملحومة

Seamless pipe is made using a piercing rod, which gives the material a smooth and even finish with no joints. This product is considered more reliable, especially in high pressure applications.

SEAMLESS CARBON PIPES

أنابيب حديد سيملس ستيل

Standard - Grade	A53-B / A106 GR B /API 5L –B A333 GR 6 For Low Temperature. A335-PI-P5-P22 High Temperature.
Size Range	From ½" up to 24"
Length	6m, 12m, SRL(Single Random Length) 5m up to 7m DRL(Double Random Length) 9m up to 13m.
Schedule	10 to XXS



SEAMLESS STAINLESS STEEL PIPES

أنابيب ستانليس ستيل غير ملحومة

Standard - Grade	ASTM Category 312 Grade 316/316 L 304/304 L
Size Range	From ½" up to 24"
Length	6m, 12m, SRL (Signal Random Length) 5up to 7m DRL (Double Random Length) 9 up to 13m
Schedule	10 to XXS



FITTINGS

الوصلات



FITTINGS

الوصلات

The basic purpose of using pipe fittings in pipe systems is to connect the bores of two or more pipes or tubes. Pipe fittings are used in piping systems normally to connect straight pipe or tubing sections, to adapt to different sizes or shapes, to branch or re-direct the piping system, if necessary to provide a jointing method if two dissimilar piping materials are used in the one system and for other purposes such as regulating, measuring or changing the direction of the fluid flow or to connect up threaded pipe and equipment. They are also used to close or seal a pipe.

1. CARBON STEEL FITTINGS

وصلات حديد

• Butt Welded Carbon Steel Fittings

Standard - Grade	A 234 WPB 420WPL (Low Temperature).
Size Range	From ½" Up To 60"
Finish	Black
Schedule	10, 20, 30, std, 40, 60, xs.80.100.120.140.160.xxs



• Forged Carbon Steel Fittings

Standard - Grade	105 N , 350 LF1, LF2, LF3 .. (Low Temperature).
Size Range	From 1/8" up to 4"
Finish	Black or Galvanized
Connection Type	NPT & (Threaded) & SW (Socket Weld)
Class Pressure	2000-3000-6000 (Psi)



• Grooved Carbon Steel Fittings

Standard - Grade	ASTM A-536. (Nuts and bolts ASTM A-183 or A-449)
Size Range	½" up to 24"
Material & Class Pressure	Ductile iron , 150 - 1000
Finish	Red Colour



• Malleable Iron Threaded Fittings

Standard - Grade	A197
Size Range & Class	1/8" up to 6" (150- 300)
Finish	Black Malleable Iron (BMI) Galvanized Malleable Iron (GMI).
Connection Type	NPT / BSPT (The thread angle is 60° for NPT threads: 55° for BSPT/BSPP threads)



2. STAINLESS STEEL FITTINGS

وصلات حديد ستانليس ستيل

- **Butt Welded Stainless Steel Fittings**

Standard - Grade	A 403
Size Range	From ½" up To 36"
Schedule	10,20,30,STD,40,60, XS ,80,100,120,140,160 & XXS
Finish	304/304L & 316/316L



3. FLANGES & ACCESSORIES

فلنجات وإكسسوارات

- **Carbon Steel Flanges**

Standard - Grade	A105 - A350 (Low Temperature)
Size Range	From ½" up to 60"
Class	150, 300, 600, 900-1500-2500-3000



- **Stainless Steel Flanges**

Standard - Grade	A182
Size Range	From ½" up to 60"
Class	150,300,600,900,1500,2500,3000
Flanges Tack Class & Schedule	W/N - S/W



4. RUBBER EXPANSION JOINT

Standard - Grade	14000 kg/ m ²
Size Range	From ½" x 2" up to 25 mm From ½" x 5" up to 38 mm 6" to above up to 50 mm
Finish	Rubber
Material	Compounded Rubber



FASTENERS

المثبتات



FASTENERS

المثبتات

A pipe fastener is a device that mechanically joins or affixes two or more pipes together. Pipe fasteners cover both high tensile and mild steel bolts, clamps, nuts, screws, washers studs, pins etc. All types of fasteners are used for both industrial and residential pipe fittings. Pipe fasteners are used in almost all types of industries. They are made of various materials and are available in various shapes, sizes, and designs.

1. PIPE SUPPORT

داعم الأنابيب

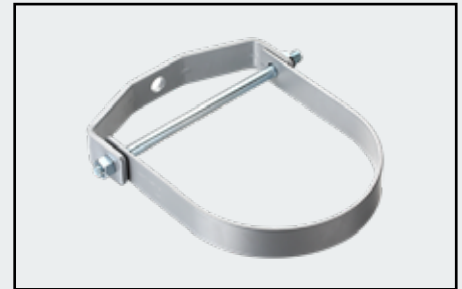
- Pipe Clamp

Standard - Grade	ww-h-1716 ,MSS SP- 69 &SP58
Size Range	From ½" up to 8"
Finish	Plain or Hot Dip Galvanized
Material	Steel Axle with Cast Iron Roller



- Clevis Hanger

Standard - Grade	DIN 934
Size Range	From ½" up to 24"
Finish	Zinc Colored Epoxy Plated : Zinc Colored Epoxy Plated
Material	Carbon Steel



- Studs & Threaded Rod

Standard - Grade	Metric, UNC, UNF, BSW, BSF
Size Range	From 1" up to 8"
Material	Carbon steel



2. BOLTS – NUTS – WASHERS

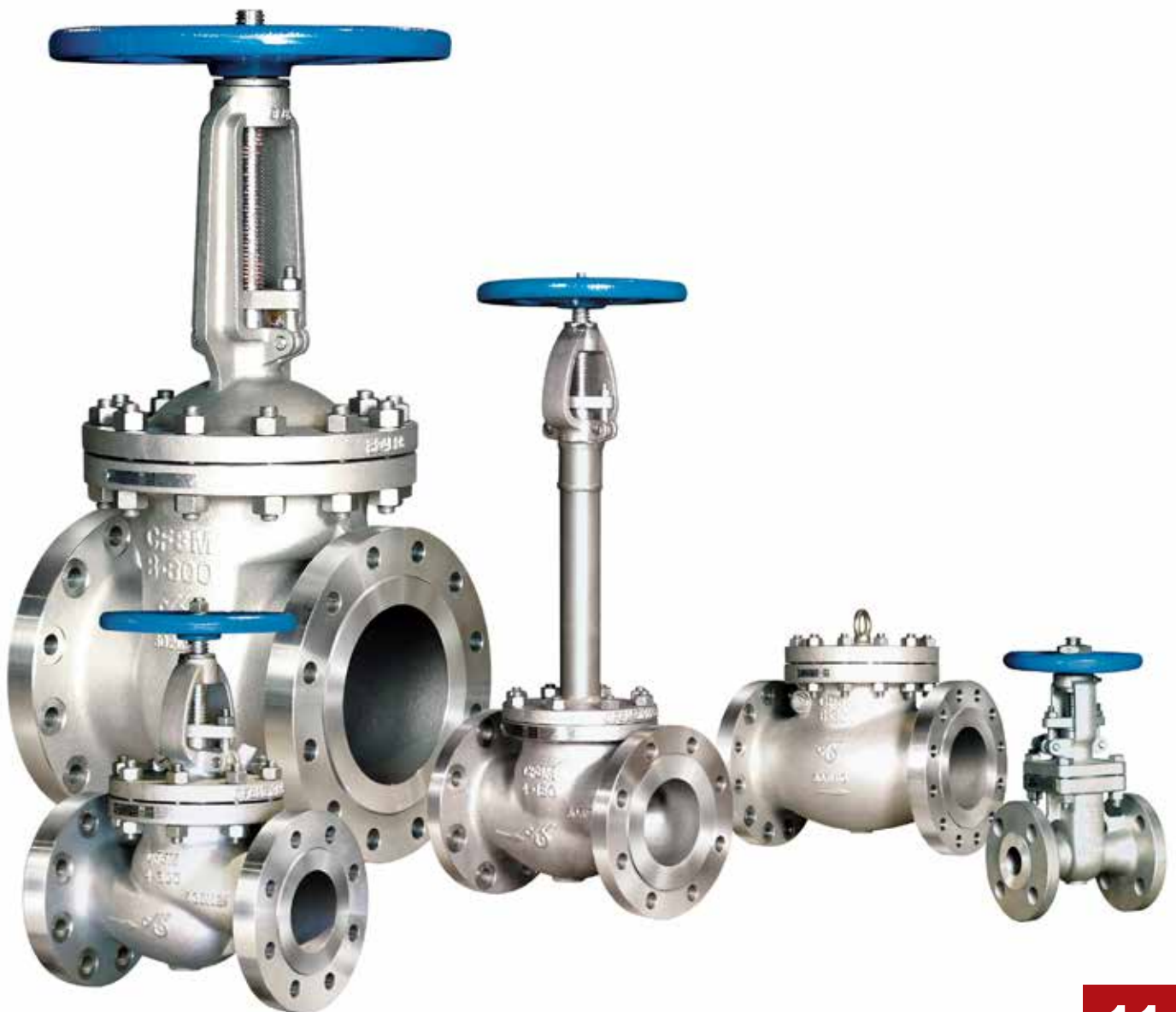
براغي - صواميل - حلقات

Standard - Grade	1363/ IS :1364
Size Range	From ½" up to 8"



VALVES

الصمامات



VALVES

الصمامات

Valves are mechanical devices that controls the flow and pressure within a system or process. They are essential components of a piping system that conveys liquids, gases, vapors, slurries etc... Different types of valves are available like gate, globe, butterfly, check, pressure relief, control valves etc. Each of these types has a number of models, each with different features and functional capabilities. Some valves are self-operated while others manually or with an actuator or pneumatic or hydraulic is operated.

1. BUTTERFLY VALVE

Grade	ASTM A126 CLASS - B
Size Range	From 2" up to 14"
Material	Cast Iron & Ductile Iron
Working Pressure	200 (PSI)



2. GLOBE VALVE

Grade	ASTM B62 C83600 & BS 1400 LG2
Size Range	From 1/2" up to 2"
Material	BRONZ, BRASS, & CAST IRON
Working Pressure	300 (PSI)



3. CHECK VALVE

Grade	ASTM B62 C83600 & BS 1400 LG2
Size Range	From 1/2" up to 2"
Material	NBR SEAT
Working Pressure	300 (PSI) 20.7 (BAR)



4. GATE VALVE

Grade	ASTM B62 C83600 & BS 1400 LG2
Size Range	From 1/2" up to 4"
Material	BRONZE ,BRASS, & CAST IRON
Working Pressure	300 (PSI)



All other sizes and grades are available upon request.

COMMERCIAL STEEL

الحديد التجاري



COMMERCIAL STEEL

الحديد التجاري

Steel is both the most widely used and most recycled metal material on earth. From stainless and hot rolled steels to flat carbon products, steel in its various forms and alloys offer different properties to meet a wide range of applications. For these reasons, as well as the metal's combination of high strength and a relatively low production cost, steel is now used in countless products.

1. HOT ROLLED SHEET & COIL

صاج وألواح مسحوبة على الساخن

Grade	ASTM A36, 275 JR, GR50, GR70, GR-C.
Width	1m, 1.22m (4") 2m
Length	As per customer requirement (coil cut)
Thickness	From 1.2mm up to 12mm (coil cut) From 1mm up to 100mm (Sheets and Plates)



2. COLD ROLLED SHEET & COIL

صاج وألواح مسحوبة على البارد

Width	1m, 1.22m (4"), 2m
Length	As per customer requirement (coil cut)
Thickness	From 0.4mm up to 2mm



3. GALVANIZED SHEET & COIL

صاج وألواح مجلفنة

Width	1m, 1.22m (4"), 1.5m
Length	As per customer requirement (coil cut)
Thickness	From 0.35mm up to 4mm Small sizes can be provided as well.



4. CHEQUERED PLATES & COIL

ألواح مبزرة

Grade	ASTMA36, 275 JR.
Width	1m, 1.22m (4")
Length	As per customer requirement (coil cut)
Thickness	From 1.6mm up to 12mm



5. BLACK PIPES

أنابيب حديد سوداء



Size Range	From ½" up to 48"
Length	6m, 12m
Thickness	From 0.9mm up to 12mm

6. GI PIPES

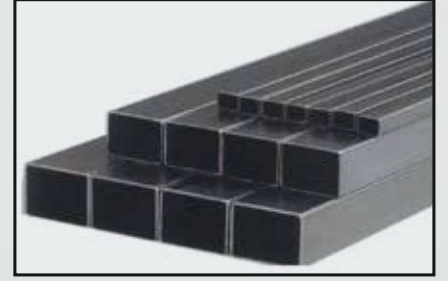
أنابيب حديد مجلفنة



Size Range	From ½" up to 48"
Length	6m, 12m
Thickness	From 1.2mm up to 12mm

7. SQUARE TUBES

تيوبات مربعة



Size Range	From 12mm X 12mm up to 400 X 400
Length	6m, 12m
Thickness	From 1.2mm up to 12mm

8. RECTANGULAR TUBES

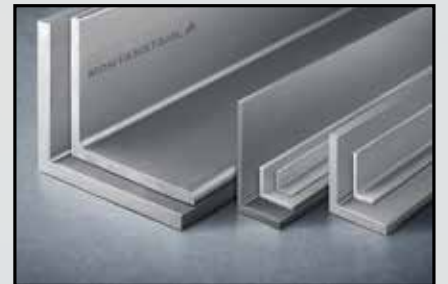
تيوبات مستطيلة



Size Range	From 15mm X 30mm up to 200mm X 400mm
Length	6m, 12m
Thickness	From 1.2mm up to 12mm

9. EQUAL & UN-EQUAL ANGLES

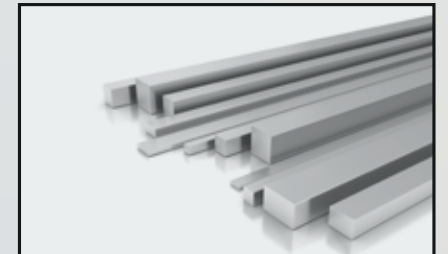
زوايا بأنواعها



Size Range	EA 20mm x 20mm x 2mm - 200mm x 200mm x 20mm UEA 40 x 20 x 4 - 200 x 100 x 15
Length	6m - 12m
Thickness	From 2 mm up to 20 mm
Grades	EN 10025 S275JR / S355JR: 1993 / ASTM A36 / A572 GR 50 / ST 44-2 ST52-3 / JIS G 3101 SS400 - 1995

10. FLAT & SQUARE BAR

قواطع معدنية مسطحة



Width	12mm x 3mm - 300mm x 50mm , 6x6mm - 100mm x 100mm
Length	6 m
Thickness	3mm

PVC & SANITARY ACCESSORIES

أنابيب (بي في سي) وإكسسوارات
صحية



PVC & SANITARY ACCESSORIES

أنابيب (بي في سي) وإكسسوارات صحية

1. PVC PIPES

أنابيب (بي في سي)

Material	UPVC & CPVC
Size Range	From ½" up to 8"
Length	6m
Schedule	SHC 40 & SCH 80



2. PVC FITTINGS

وصلات (بي في سي)

Material	UPVC & CPVC
Size Range	From ½" up to 8"
Finish	ELBOW, COUPLING, TEE, WYE eq, ELBOW DOOR, P-TRAP, TEE CROSS, TEE SANITARY FLOOR, END CAP, ...
Schedule	SHC 40 & SCH 80



3. JAS-WELD – SOLVENT CEMENT

غراء ومنظف للأنابيب



CPVC Cement
Heavy Body, Orange



PVC Cement
Regular Body, Clear



PVC Cement
Heavy Body, Gray



Pipe
Cleaner

4. SANITARY ACCESSORIES

إكسسوارات صحية



More items and different brands are available upon request.

المنطقة الشرقية
فرع الدمام

الدمام، الخالدية | 📍
المملكة العربية السعودية
+٩٦٦ ١٣ ٨١٤ ١٢٤٤ | 📞

المنطقة الوسطى
فرع الرياض

ص.ب. ٩٩٨٤ الرياض ١١٤٢٣ | 📍
المملكة العربية السعودية
+٩٦٦ ١١ ٢٧٠ ٥٥١١ | 📞
+٩٦٦ ١١ ٢٤٢ ٤٢٧١ | 📞

المنطقة الغربية
المكتب الرئيسي - جدة

ص.ب. ١١٧١٣٧ جدة ٢١٣٩١ | 📍
المملكة العربية السعودية
+٩٦٦ ١٢ ٦٦٤ ٩١٩١ | 📞
+٩٦٦ ١٢ ٦٦٥ ٩٣٩٣ | 📞
+٩٦٦ ١٢ ٦٦٣ ٣٤٤٨ | 📞
+٩٦٦ ١٢ ٦٦٤ ٩١٩١ تحويلة: ٢٢٢ | 📞
٤٠٣٠٤٦٨١٠٩ | 📞

Eastern Branch
Dammam Branch

📍 | Dammam, Al Khalidia
Kingdom of Saudi Arabia
📞 | +966 13 814 1244

Central Region
Riyadh Branch

📍 | P.O.Box 9984 Riyadh 11423
Kingdom of Saudi Arabia
📞 | +966 11 270 5511
| +966 11 242 4271

Western Region
Head Office - Jeddah

📍 | P.O.Box 117137 Jeddah 21391
Kingdom of Saudi Arabia
📞 | +966 12 664 9191
+966 12 665 9393
+966 12 663 3448
📞 | +966 12 664 9191 Ext:222
ca. | 4030468109



info@imdadat.net



www.imdadat.net



Our Website



Our Location